

# Memo (Agenda February 2020)

**To: Parish Councillors**

c.c: Nigel Jupp (County Councillor) & Toni Bradnum (District Councillor)

**From:** Sarah Hall

**Date:** 5<sup>th</sup> January 2020 (week commencing 30<sup>th</sup> December 2019)

**Re:** COUNCILLORS' BRIEFING NOTE

---

I have outlined below a number of recent developments for your information.

(1) **Planning Applications Issued**

Number	Applicant & Reason	Consultation Closes	NPC Meeting
<a href="#">DC/19/2565</a> 31.12.2019	Change of use of stable building for the use of storage for riding equipment, farming tools and installation of toilet, wash basin and area for kettle and microwave Hopeland, Polecat Lane, Copsale	??	Planning 22.01.2020

(2) **HDC Decisions**

Number	Applicant & Reason	Comment to HDC	HDC Decision
	None		

(3) **Appeals**

Number	Applicant & Reason	PI Decision
	No updates	

(4) **Enforcement Numbers**

Number	Nature of Complaint	HDC Action
<a href="#">EN/19/0614</a>	Alleged: Commencement of internal works Dun Horse Inn, Brighton Road, Mannings Heath	Investigation complete

---

**Clerks Update**

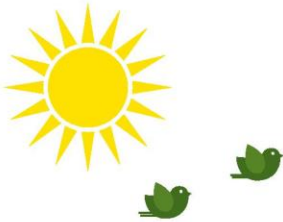
- Chased up UKPN re the repair of the street light on Church Road, opp Woodlands Walk.

**Community Speed Watch Data**

No updated data

**Correspondence**

Email dated 30<sup>th</sup> December 2019, from HDC  
Horsham District Local Plan 2019-2036



# We're planning for the future

## Horsham District Local Plan 2019-2036

The Government has instructed all local authorities to build a significant number of new houses in the coming years.

The Horsham District Local Plan will set out how the District will deliver these developments in a sustainable way, addressing climate change issues and supporting the delivery of community infrastructures, transport links and opportunities for local, well paid jobs.

The new Local Plan will guide development in the District until 2036.



“stay  
informed”

We will be consulting on the first draft of the Horsham District Local Plan 2019-2036 in **February to March 2020**.

Your involvement in this process is very important.

Find out more and sign up today for updates  
[www.horsham.gov.uk/localplanreview](http://www.horsham.gov.uk/localplanreview)



## West Sussex recycles

### Christmas tree recycling

Each of the Districts and Boroughs around West Sussex has different collections or drop-off schemes in place for your real Christmas tree this year, so we've put together a helpful guide for residents:

**Adur & Worthing:** all residents can place trees out for collection with weekly garden waste collections from 13th January, although if they are very large - over 6ft - please cut them in half so that they fit into the truck



**Arun:** trees need to be cut up and placed in the brown bin, with the lid closed

**Chichester:** residents that subscribe to the Garden Recycling Service can leave their real Christmas tree out with their collection to be recycled. Residents may also be interested to know that [St Wilfrid's Hospice are running their own charity collection scheme](#). From 6<sup>th</sup> – 20<sup>th</sup> January, St Wilfrid's volunteers can collect your Christmas tree direct from your home in return for a donation. Chichester District Council are helping by making sure all the trees collected are then recycled.

**Crawley:** one real Christmas tree per household can be recycled with the first GREENbin garden waste collection in the New Year (if you have [subscribed to the service](#)). Please remove all decorations and place it by the side of your GREENbin.

**Horsham:** trees can be cut up and placed in to the garden bin for collection.

**Mid-Sussex:** there will be [collection points](#) in the district where residents can drop off Christmas trees; they are open until Friday 10<sup>th</sup> January 2020. Most of the collection points are in MSDC car parks.

---

Alternatively real trees can be taken to your nearest Household Waste Recycling Site and placed with the green waste.

Fake trees that still have use can be donated to charity shops or offered via online services such as Freecycle. If they have gone past being usable they can be taken to the HWRS and placed in the general waste container.

---

## ID scheme now in place at Household Waste Recycling Sites in West Sussex



Please remember that anyone using a West Sussex HWRS needs to provide proof of residency in West Sussex. You can find out more about the new scheme [on the West Sussex County Council website](#), including additional information as to how the scheme will be implemented, and details of the ID that will be accepted.

You can find details of your local site [on our website](#).

---

## Win with #MakeMemoriesNotWaste

Don't forget that there is still time to enter our #MakeMemoriesNotWaste competition, simply by sharing your homemade or handmade gift ideas with us.

Tag us - @WSRecycles - on your social media channel of choice and show us what you have made.

The competition will close on Sunday 5 January, and you can be in with a chance of winning a £50 experience voucher - giving the winner a chance to make even more memories!



---

## Post-Christmas recycling



Don't forget that you can always find information on recycling on our website, as well as via [Facebook](#), [Twitter](#) and [Instagram](#).

Once Christmas is over you can recycle all your cards and most wrapping paper, along with glass bottles and jars, plastic bottles, pots, tubs and trays, aluminium foil aerosols, metal cans, and cartons.

Any recycling that does not fit into your bin at home can be taken to the nearest HWRS, or some councils will take extra recycling that is left next to the bin, as long as it is kept clean and dry. You can use the links in the Christmas tree section above to find out more information from your local council.

---

## Sign up for our monthly newsletter

Finally, we know that if you receive this email you are passionate about waste prevention and recycling.



If you find these emails helpful, why not share it with a friend and get them to [subscribe](#) to the West Sussex Recycles newsletter as well.

Help us spread the message and get more people on board to make West Sussex a [strong, safe and sustainable place](#) to live.

You can also like our [Facebook](#) page to keep up to date with the latest news and tips on waste reduction and recycling.

---



[Manage your preferences](#) | [Help with your account](#)